

MONTHLY MEMBERSHIP PROGRESS REPORT

District 325 H

Results as of: 8/31/2024

GMT:

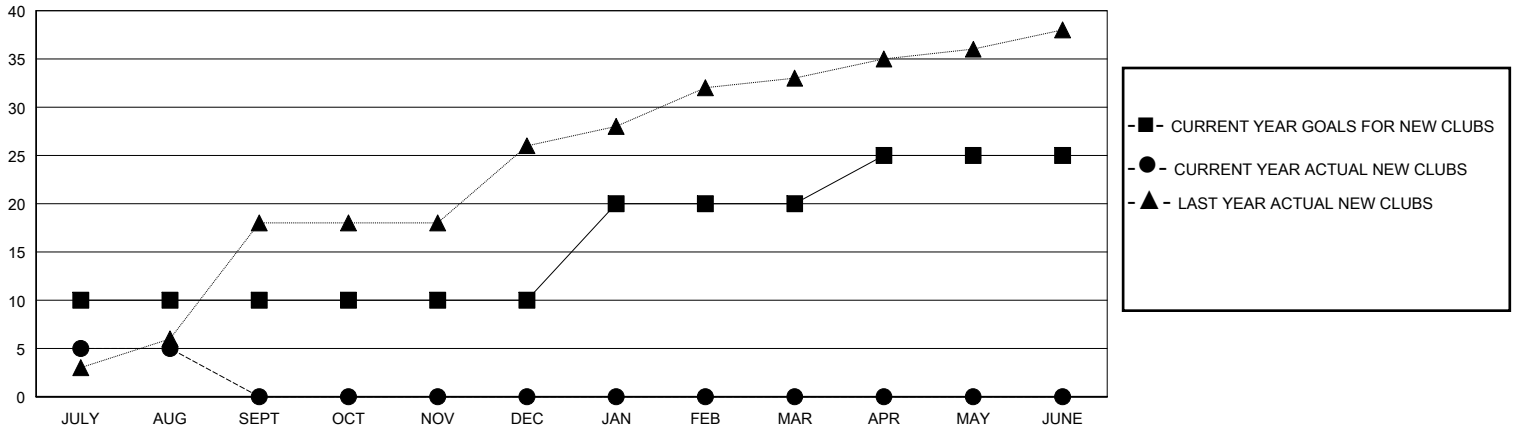
LOCATION NEPAL

GMT CA

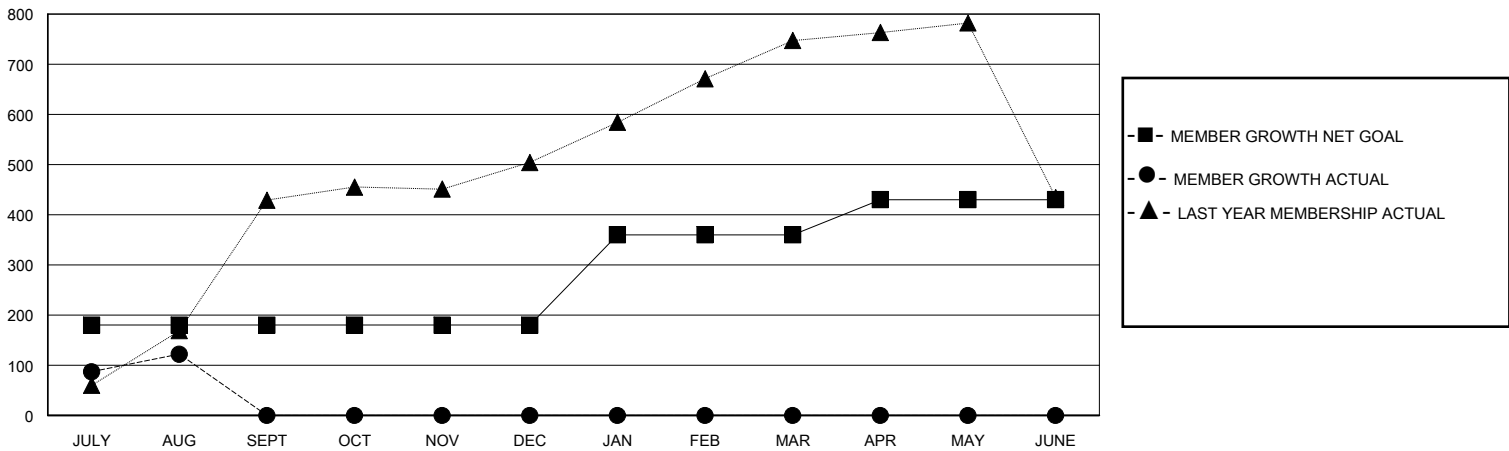
Clubs			
RESULTS FOR 2024-2025			
QUARTER	NEW CLUB GOAL	NEW CLUBS	DROPPED CLUBS
JULY/AUG/SEPT	10	5	3
OCT/NOV/DEC	0	0	0
JAN/FEB/MAR	10	0	0
APR/MAY/JUNE	5	0	0

Members			
RESULTS FOR 2024-2025			
QUARTER	MEMBER GROWTH NET GOAL	MEMBER GROWTH ACTUAL	DROPPED MEMBERS ACTUAL (including transfers)
JULY/AUG/SEPT	180	196	63
OCT/NOV/DEC	0	0	0
JAN/FEB/MAR	180	0	0
APR/MAY/JUNE	70	0	0

GOALS AND ACTUAL NEW CLUBS CUMULATIVE



GOALS AND ACTUAL MEMBERS CUMULATIVE



DROPPED CLUBS: 3

33 CLUBS OF 120 ADDED 1 OR MORE NEW MEMBERS

GENDER DISTRIBUTION

MALE 1,848 (67.45%)
FEMALE 892 (32.55%)

DROPPED MEMBERS

DECEASED	0
CLUB CANCELLED	35
OTHER	28
TOTAL	63

[CLICK HERE FOR CUMULATIVE MEMBERSHIP DATA](#)

TOTAL FAMILY UNIT MEMBERS	560
FAMILY MEMBERS PAYING HALF DUES	329